

autoclose*

AND THE DOORS CLOSE BY THEMSELVES !

The 10 autoclose PLUSES

1. Different

Nothing to do with conventional door closing devices that are unsightly and too visible, that squeak, rust, have to be adjusted, wear out, grip, break... AUTOCLOSE is new, unique in the world.

2. Esthetics

Nothing hits the eye. You hardly notice a thin stainless steel tube (that can be painted) running up the door jamb and containing the AUTOCLOSE device (see next how it works).

3. Effective

Even when just cracked open, the AUTOCLOSE door closes automatically and completely.

4. Comfortable

The door opens with a light push and closes gradually, without slamming.

5. Quiet

No friction, no hydraulic or compressed air "pumping" : AUTOCLOSE closes the door noiselessly and discreetly, without a squish.

6. No wear

No moving mechanical parts, so no wear.

7. No adjustment

At the time it is installed the closing force is set once and for all. It will stay that way indefinitely.

8. Inviolable

Impossible to remove without the specific tools, and unbreakable, AUTOCLOSE is safe against thieves and vandals.

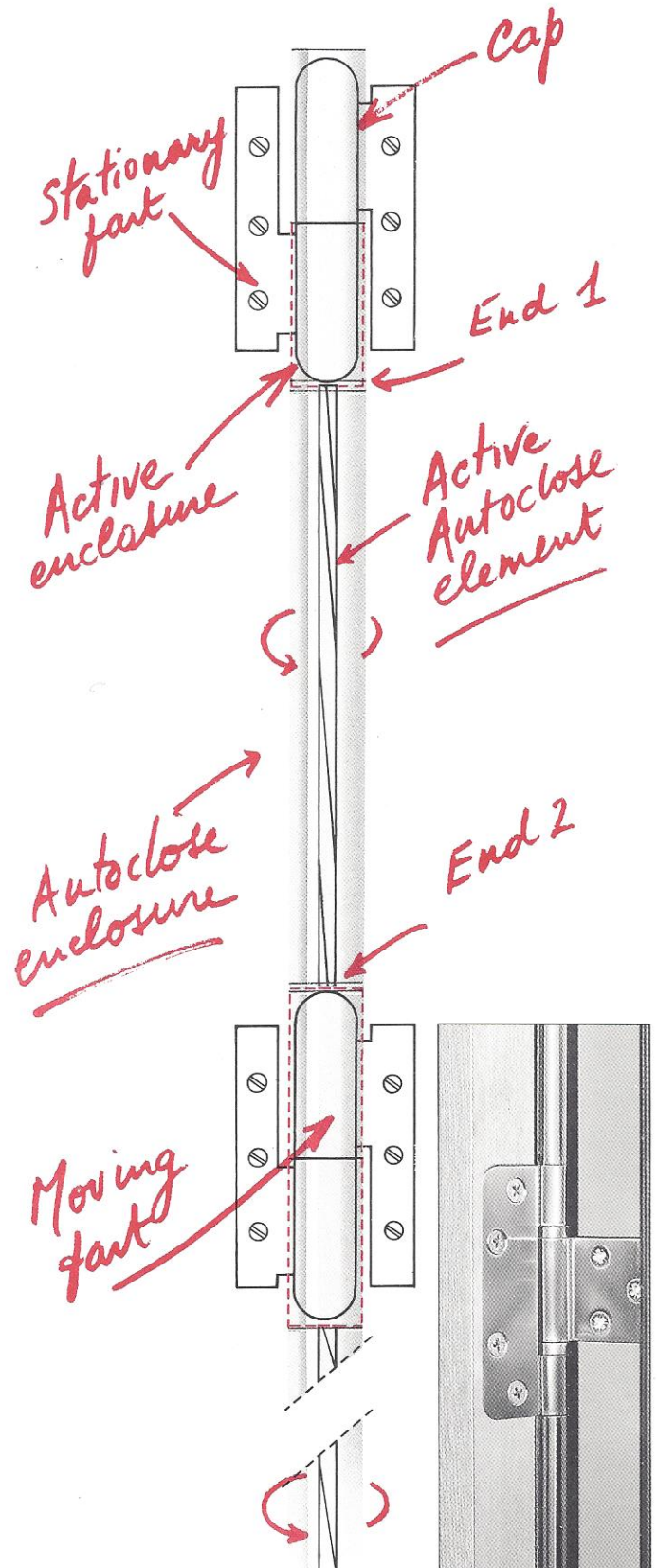
9. No maintenance

AUTOCLOSE needs no greasing, adjustment or overhaul.

10. Fast to install

AUTOCLOSE is installed in a few minutes on the existing hinges, with no risk of damage.

* SGDG patent.



Stamp retailer